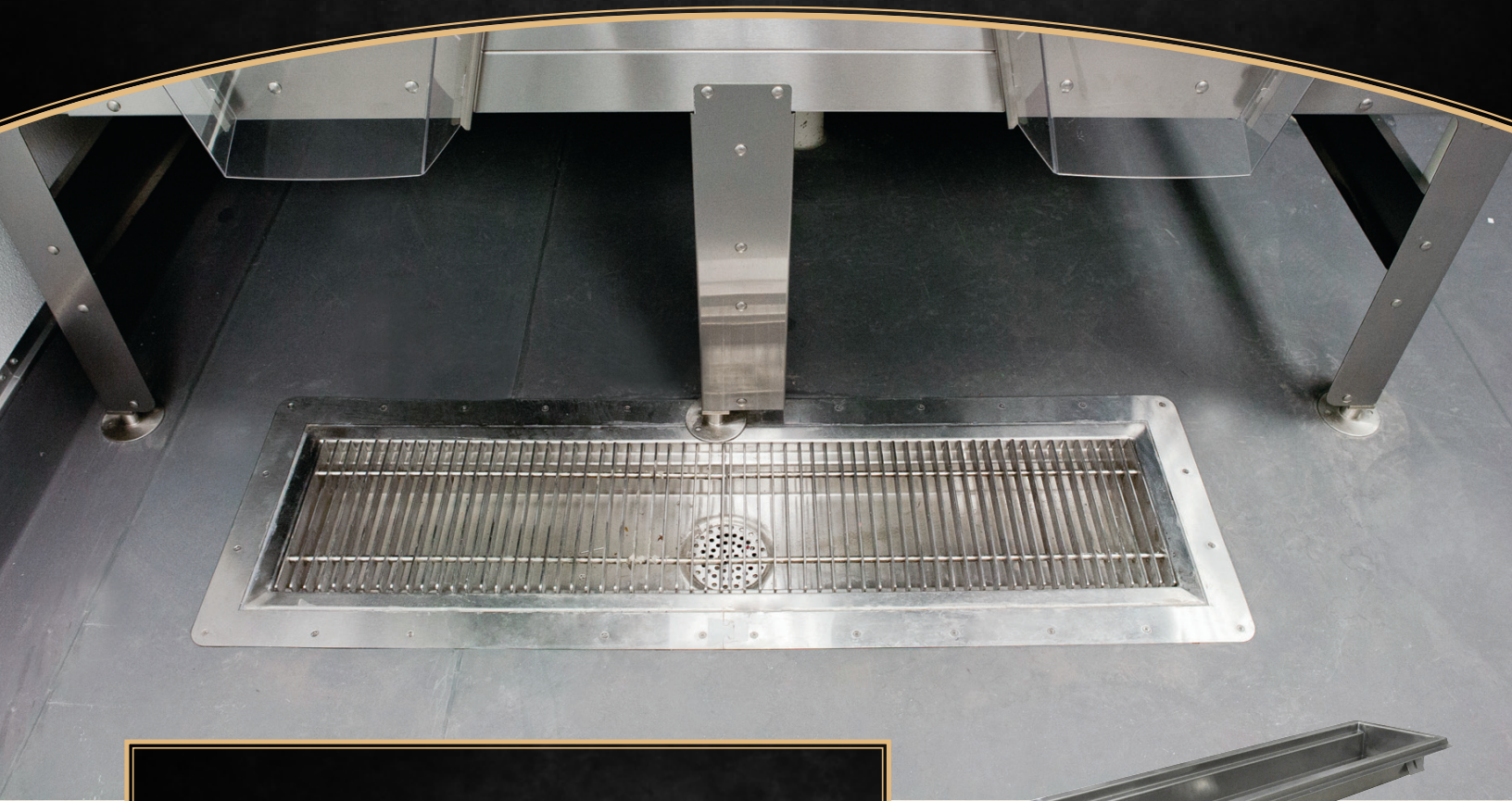


Boos[®] Blocks

STAINLESS STEEL FLOOR TROUGHS

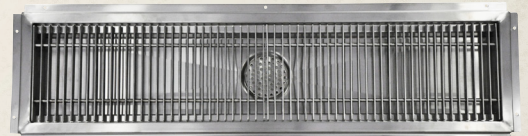
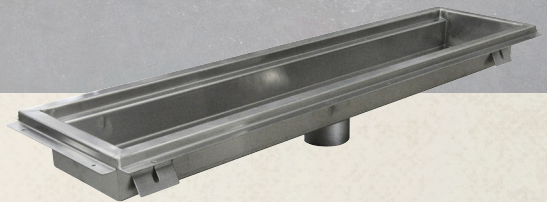


PRODUCT DESCRIPTION

- 14 GAUGE 300 SERIES STAINLESS STEEL CONSTRUCTION
- WITH MOUNTING FLANGE
- REMOVABLE 3/16" X 1" STAINLESS STEEL FLATBAR SUBWAY GRATE
- BOTTOM PITCHED TO A 6" ROUND DRAIN W/ REMOVABLE FLAT PERFORATED STRAINER
- 4" ROUND STAINLESS STEEL NO-HUB PIPE CONNECTION

IMAGE SHOWN: FTSG-1248

SIZE (LxW)	WEIGHT	MODEL #
24" X 12"	25 LBS	FTSG-1224
36" X 12"	37 LBS	FTSG-1236
48" X 12"	50 LBS	FTSG-1248
60" X 12"	62 LBS	FTSG-1260
24" X 18"	37 LBS	FTSG-1824



SERVING OUR CUSTOMERS FOR

125 YEARS



John Boos & Co.
3601 S. Banker St. • P.O. Box 609 • Effingham, IL 62401
Phone: (888) 431-2667 • Fax: (800) 433-2667 • www.johnboos.com
Email: sales@johnboos.com • E-Commerce: purchaseorders@johnboos.com

